

## Installation Guide

The entire Weepa range is compatible with many brick and block sizes, works well with rendered surfaces and can be used in light weight panel wall systems to create a beautiful finish as described in the following pages.



### Installation for face brick or block walls



Refer to page 2

### Installation for rendered surfaces



Refer to page 3

### Installation for light weight panel wall



Refer to page 4

Watch the Weepa installation video by scanning this QR code or by visiting:  
<https://weepa.com.au/videos/how-to-install-a-weepa-during-construction/>



For more information, visit the Weepa website ([www.weepa.com.au](http://www.weepa.com.au))

Weepa Products PTY LTD (ABN 52 011 011 457) - PO Box 3325 South Brisbane QLD 4101 - Phone (07) 3844 3744 – Email - [enquiries@weepa.com.au](mailto:enquiries@weepa.com.au)

# Installation Guide

The entire Weepa range is compatible with many brick and block sizes, works well with rendered surfaces and can be used in light weight panel wall systems to create a beautiful finish.



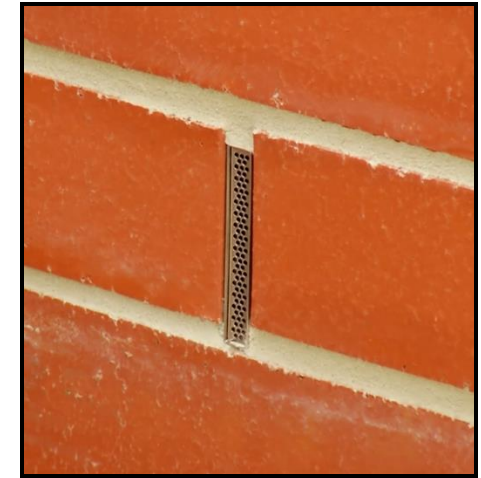
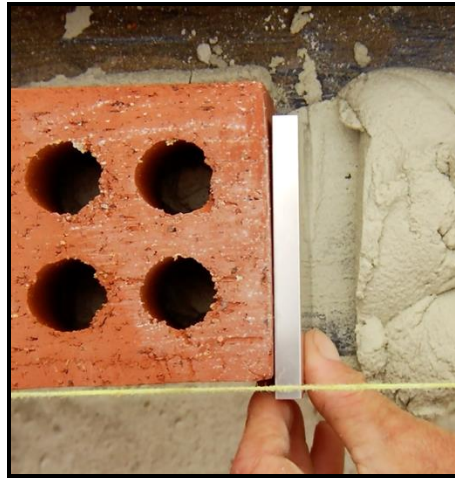
## Guide for installation in non-rendered brick or block masonry walls (see page 3 for rendered surfaces and page 4 for light weight panels)

**Step 1** – Install the Weepa in the perpend joints between bricks or blocks, at specified intervals and firmly in contact with the flashing.

**Step 2** – If you intend on rendering, loosen the Weepa and see page 3 for next steps.

**Step 3** – If not rendering, set the Weepa at a depth level with the mortar. After clean up, remove the mortar guard with a small, flat screwdriver.

**Step 4** – The Weepa grate provides protection for a wide range of pests and bushfire protection (see notes below).



- Notes**
1. Stainless Steel Weepa shown, however all Weepas can be installed using this method.
  2. Weepas are available in a variety of sizes (heights and depths). Check the Technical Datasheets for exact dimensions to suit the bricks, blocks or panel being used and note that additional depth (for thicker wall sections) can be achieved by using the Weepa Extension (product code 17-EXTW).
  3. Weepas with a Bushfire Attack Level (BAL) of BAL-A12.5 and above are specially designed with integrated 316 Stainless Steel mesh or grates. Other components are made of materials that char and self extinguish. Refer to Technical Datasheets for details.

For more information, visit the Weepa website ([www.weepa.com.au](http://www.weepa.com.au))

Weepa Products PTY LTD (ABN 52 011 011 457) - PO Box 3325 South Brisbane QLD 4101 - Phone (07) 3844 3744 – Email - [enquiries@weepa.com.au](mailto:enquiries@weepa.com.au)

# Installation Guide

The entire Weepa range is compatible with many brick and block sizes, works well with rendered surfaces and can be used in light weight panel wall systems to create a beautiful finish.



## Guide for installation with rendered surfaces (see page 2 for non-rendered brick and block walls and page 4 for light weight panel walls)

**Step 1** – Install the Weepa between bricks or blocks, at specified intervals and firmly in contact with the flashing.

**Step 2** – loosen the Weepa and set out slightly

**Step 3** – Pull the Weepa by pulling out slightly with a pair of pliers before the mortar fully sets.

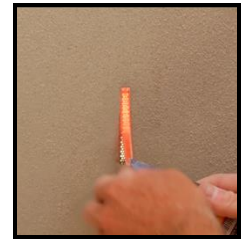
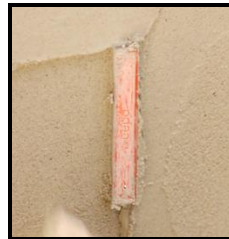
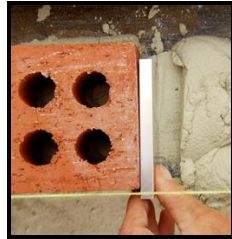
**Step 4** – Apply render around the Weepa to the desired depth.

**Step 5** – Pat the Weepa back into the wall to match the depth of the render.

**Step 6** – Float around and over the top of the Weepa.

**Step 7** – Sponge to finish ensuring the mortar guard is clean (now and after painting, if painted).

**Step 8** – Once dry (and after painting, if painted), remove mortar guard.



The Weepa grate provides protection for a wide range of pests and bushfire protection (see notes below).



- Notes**
1. Stainless Steel Weepa shown, however all Weepas can be installed using this method.
  2. Weepas are available in a variety of sizes (heights and depths). Check the Technical Datasheets for exact dimensions to suit the bricks, blocks or panel being used and note that additional depth (for thicker wall sections) can be achieved by using the Weepa Extension (product code 17-EXTW).
  3. Weepas with a Bushfire Attack Level (BAL) of BAL-A12.5 and above are specially designed with integrated 316 Stainless Steel mesh or grates. Other components are made of materials that char and self extinguish. Refer to Technical Datasheets for details.

For more information, visit the Weepa website ([www.weepa.com.au](http://www.weepa.com.au))

Weepa Products PTY LTD (ABN 52 011 011 457) - PO Box 3325 South Brisbane QLD 4101 - Phone (07) 3844 3744 – Email - [enquiries@weepa.com.au](mailto:enquiries@weepa.com.au)

# Installation Guide

The entire Weepa range is compatible with many brick and block sizes, works well with rendered surfaces and can be used in light weight panel wall systems to create a beautiful finish.



## Guide for installation with light weight panel walls (see page 2 for non-rendered brick and block walls and page 3 for rendered surfaces)

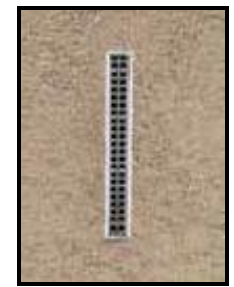
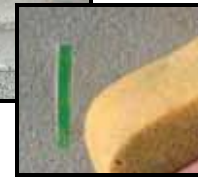
**Step 1** – Mark the outline of the weep hole on each board at recommended centers and between each batten, then cut out with a jab saw for a firm fit.

**Step 2** – Fix board as recommended by the Supplier and check Weepa depth at back to ensure adequate clearance of studs and flashing. It is important to check that ventilation is not impeded.

**Step 3** – Push Weepa into weep hole slot at the desired depth so it acts as formwork for coating or finish.

**Step 4** – Apply render (see details on pervious page), or paint as desired. Clean the Weepa cover of excess render, finish and paint at each stage.

**Step 5** – Once final finish is achieved, remove mortar guard using a small, flat head screwdriver as shown. The Weepa grate provides protection for a wide range of pests and bushfire protection (see notes below).



**Attention:** Weepa does not encourage cutting out weep holes after panels are fixed as this could compromise important building elements such as the waterproof membrane.

**Note** - If necessary, cut the back off the Weepa to suit the depth of the panel and remove dags.



- Notes**
1. Standard Weepa shown, however all Weepas can be installed using this method.
  2. Weepas are available in a variety of sizes (heights and depths). Check the Technical Datasheets for exact dimensions to suit the bricks, blocks or panel being used and note that additional depth (for thicker wall sections) can be achieved by using the Weepa Extension (product code 17-EXTW).
  3. If using a BAL rated Weepa in a light weight panel wall for bushfire protection purposes, seek guidance from the Specifier and Certifier about compatible wall systems to suit your circumstances.

For more information, visit the Weepa website ([www.weepa.com.au](http://www.weepa.com.au))

Weepa Products PTY LTD (ABN 52 011 011 457) - PO Box 3325 South Brisbane QLD 4101 - Phone (07) 3844 3744 – Email - [enquiries@weepa.com.au](mailto:enquiries@weepa.com.au)